

New Storage Warehouse – Wallsend

Client:
Safestore plc

Architect:
Loates-Taylor Shannon

Quantity Surveyor:
PSE Associates

Value:
£2m



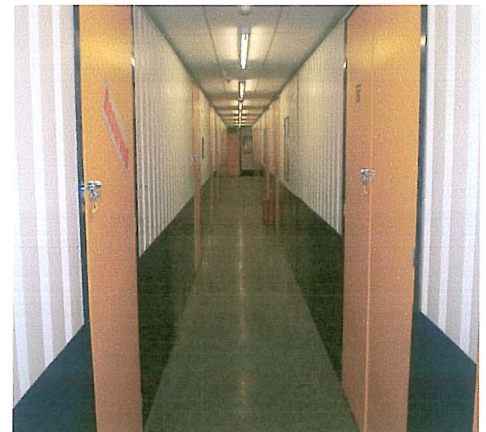
Brief

To construct a new 4 storey warehouse for self storage including access road at Middle Engine Lane.

Action

The contract comprised a new 4 storey warehouse of 7,400 sq m with mezzanine floors and extensive internal fit out.

The scheme also provides for reception areas, office space and all external works including yard areas, car parking spaces and landscaping.




Hallconstruction
Hall Construction Services Limited

Stotforth Hill House, Windlestone, Rushyford, Co. Durham DL17 0NF
Telephone: 01325 311013 Facsimile: 01325 311571
www.hallconstruction.uk.com e-mail: mail@hallconstruction.uk.com