

# New Offices – Newcastle-upon-Tyne

**Client:**

Priority Sites

**Employer's Agent:**

Chipchase Associates

**Architect:**

Shuttleworth Picknett Associates (HCSL)

**Engineer:**

Billinghurst George & Partners (HCSL)

**Quantity Surveyor:**

Lumsdon Wood Associates

**Value:**

£3.7m



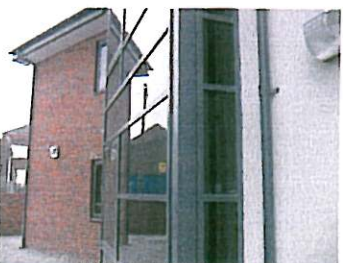
## Brief

To design and construct a flagship office development to be known as Media Exchange at Upper Steenberg's Yard, Ouseburn.

## Action

The contract comprises 3 office blocks with a total floor area of 30,000 sq ft on a terraced site. The scheme also provides for all external works including car parking spaces and landscaping.

The project achieved a 'Very Good' BREEAM rating.



**Hall**construction  
Hall Construction Services Limited

Stotforth Hill House, Windlestone, Rushyford, Co. Durham DL17 0NF  
Telephone: 01325 311013 Facsimile: 01325 311571  
[www.hallconstruction.uk.com](http://www.hallconstruction.uk.com) e-mail: [mail@hallconstruction.uk.com](mailto:mail@hallconstruction.uk.com)